



***Echinothamnion* spp. ◀**

Branches shaggy and bushy, and of unequal length, with whorls of short branchlets. Similar to *Ballia hirsuta*, but branchlets shorter and coarse in texture. Reddish brown, but brown-green when bleached. Up to 150mm long.

Standout feature: Branchlets shaggy and coarse in texture. Sometimes epiphytic.

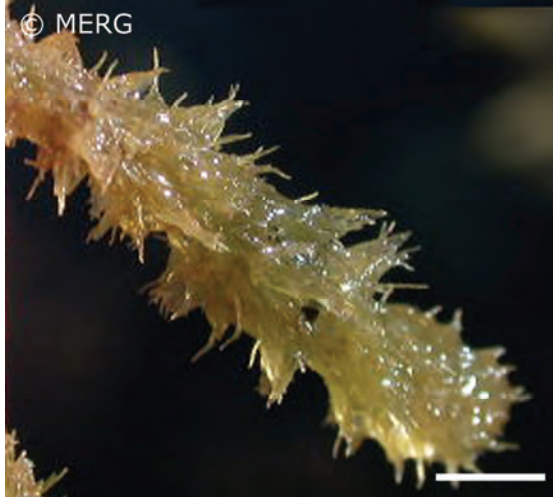
Zone: Intertidal to subtidal and in pools.

Distribution: North Island south of Auckland, all of South Island.

Specimen from: Wairepo Flats, Kaikoura.

Scale (top left): 50mm.

Scale (bottom left): 5mm.



***Helminthocladia* spp. ▶**

Tiny, tightly packed cylindrical stipes forming discrete cushions. Very firm and erect. The holdfast is a fleshy pad. Less than 15mm high and dull brownish to pink in colour.

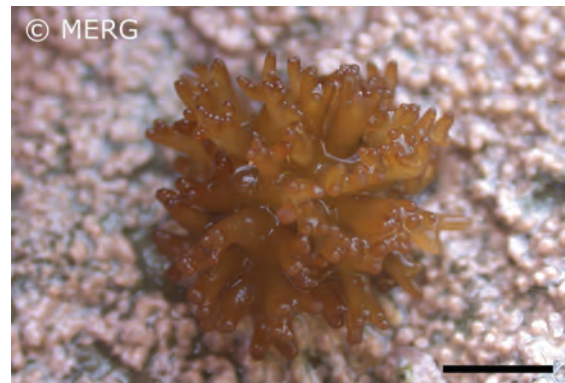
Standout feature: Resembles tiny pin-cushions.

Zone: On bare rock in the mid to low intertidal.

Distribution: North, South, and Chatham Islands.

Specimen from: Sharks Tooth, Kaikoura.

Scale: 5mm.



***Laurencia thyrsifera* ◀**

The main stipe is cylindrical with many congested side branches. The holdfast is a disc. Grows up to 150mm and is dull purplish brown in colour, green-yellow when bleached. Texture firm.

Standout feature: Ends of side branches resemble grape clusters.

Zone: Lower intertidal to subtidal on exposed reefs.

Distribution: North and South Islands, Stewart and Chatham Islands.

Specimen from: Wairepo Flats, Kaikoura.

Scale: 10mm.

